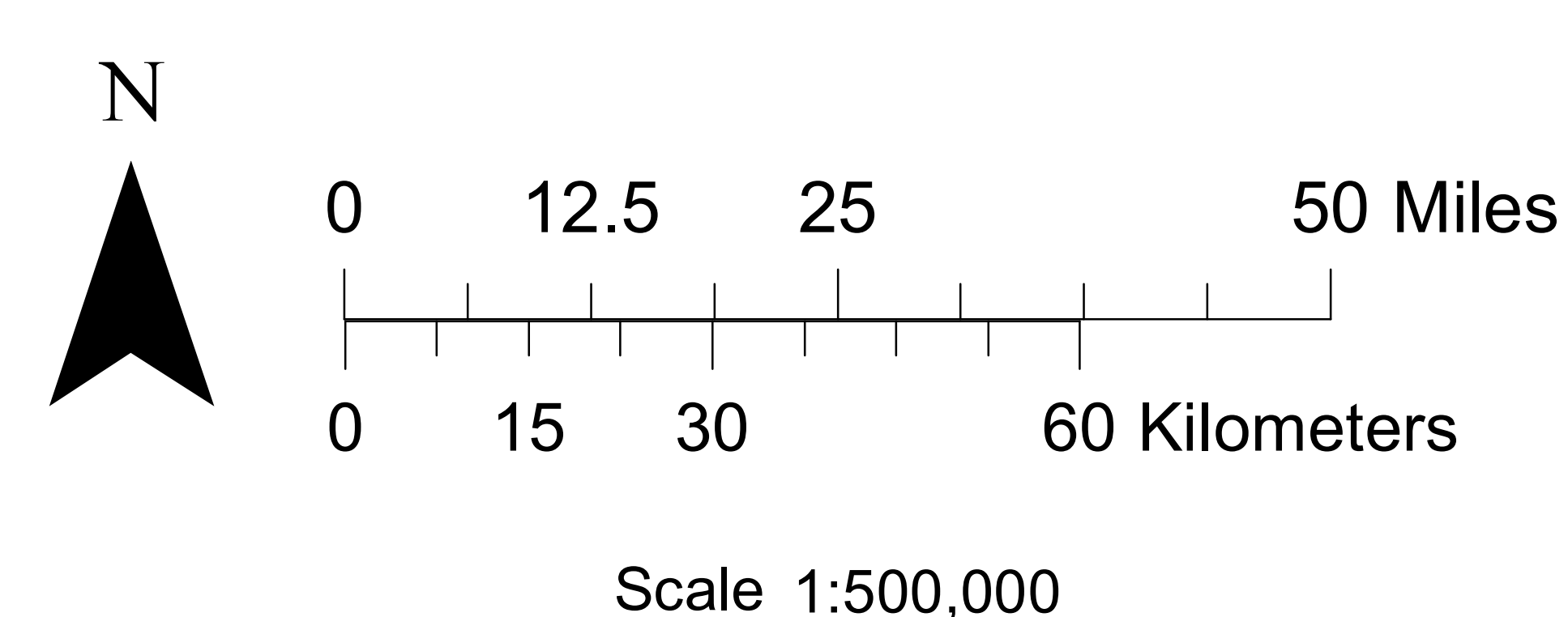
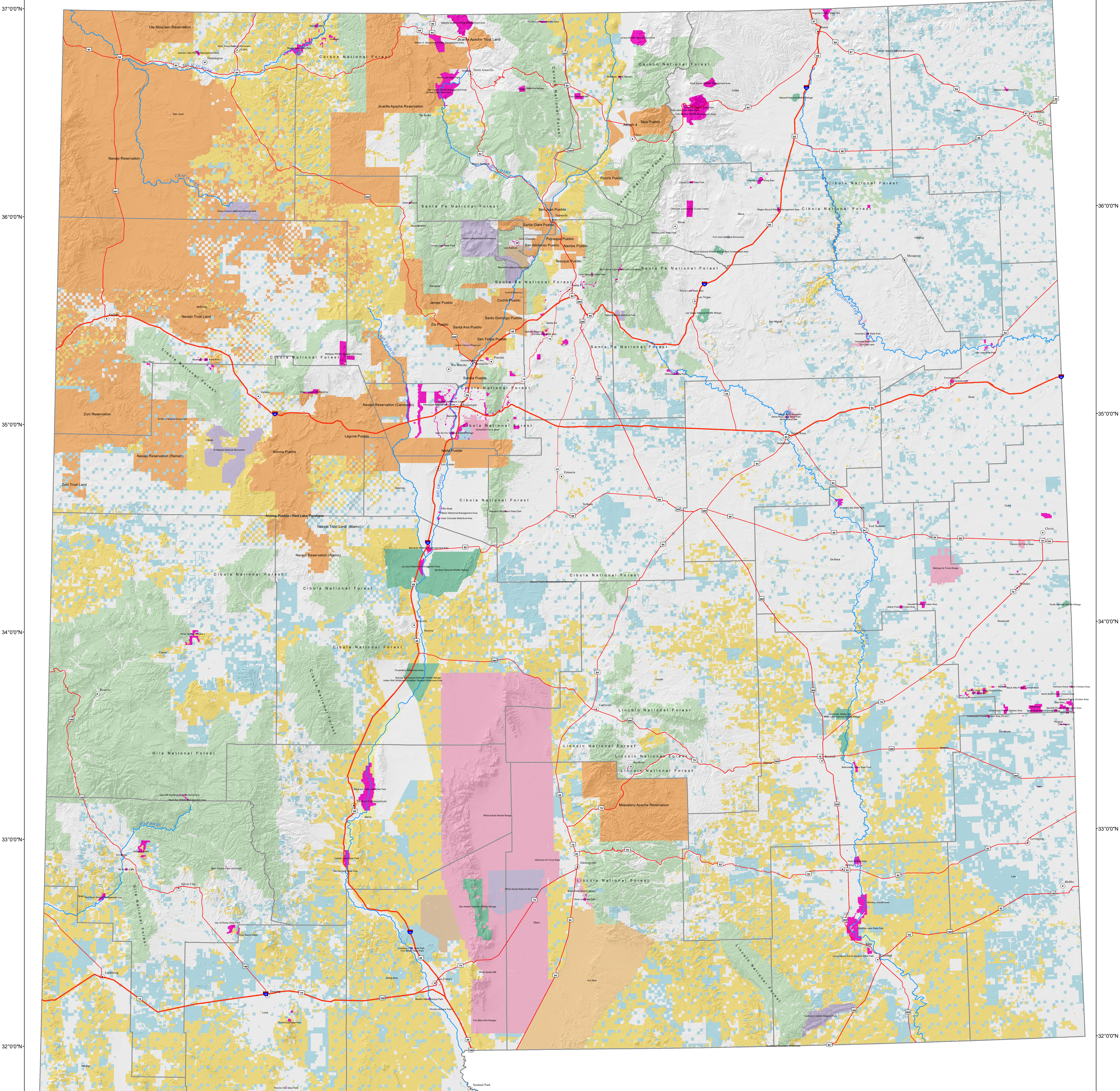


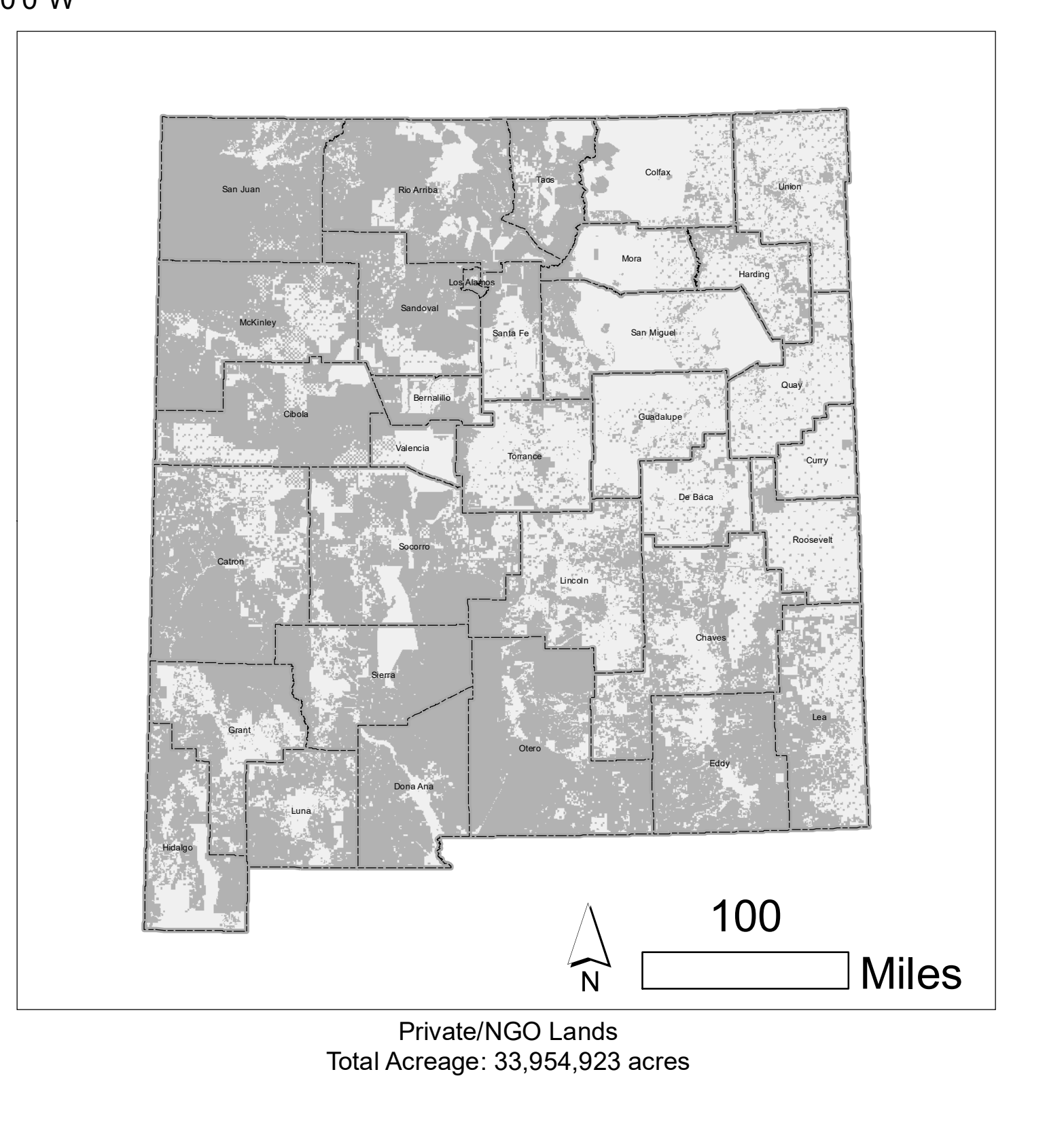
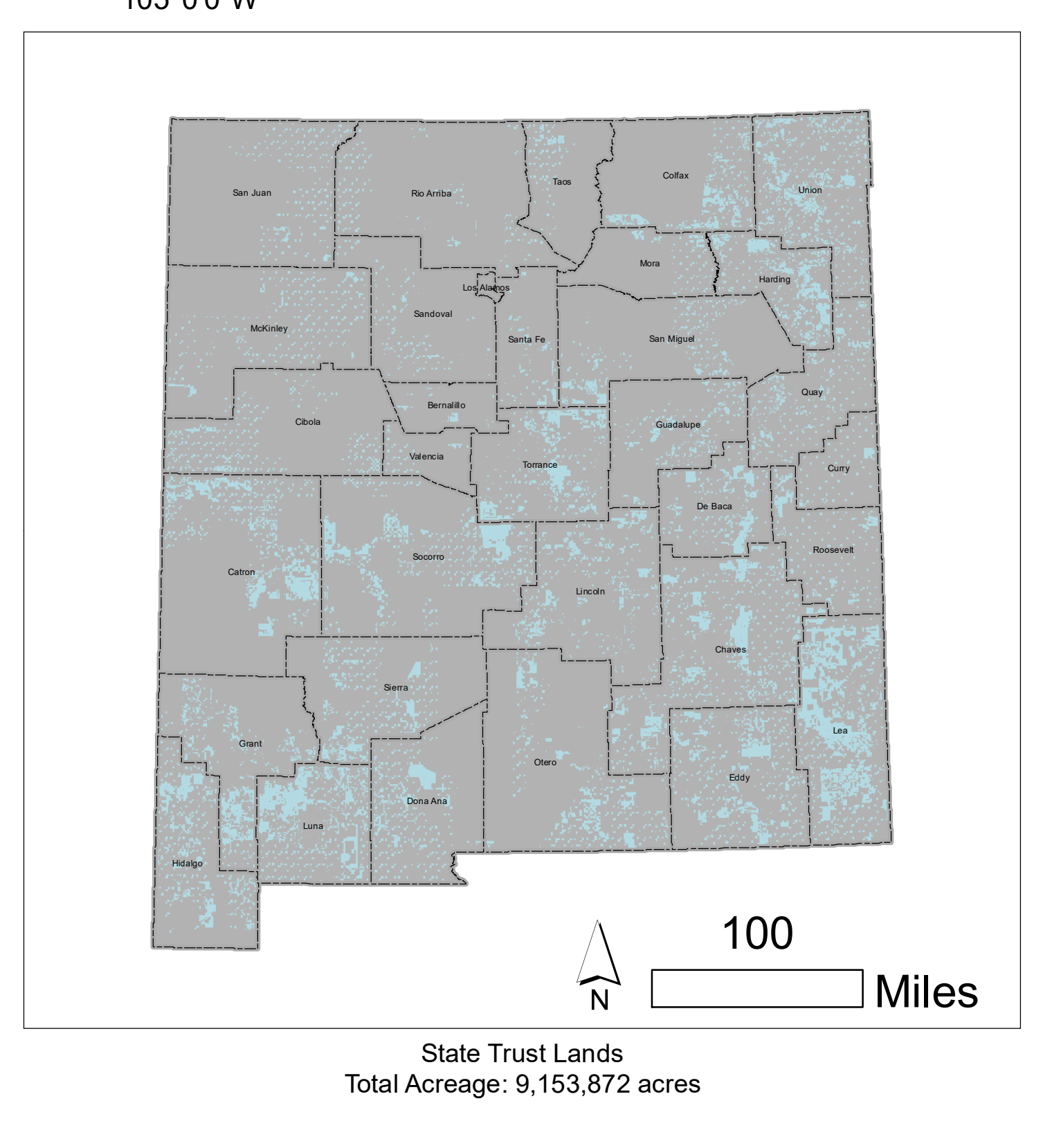
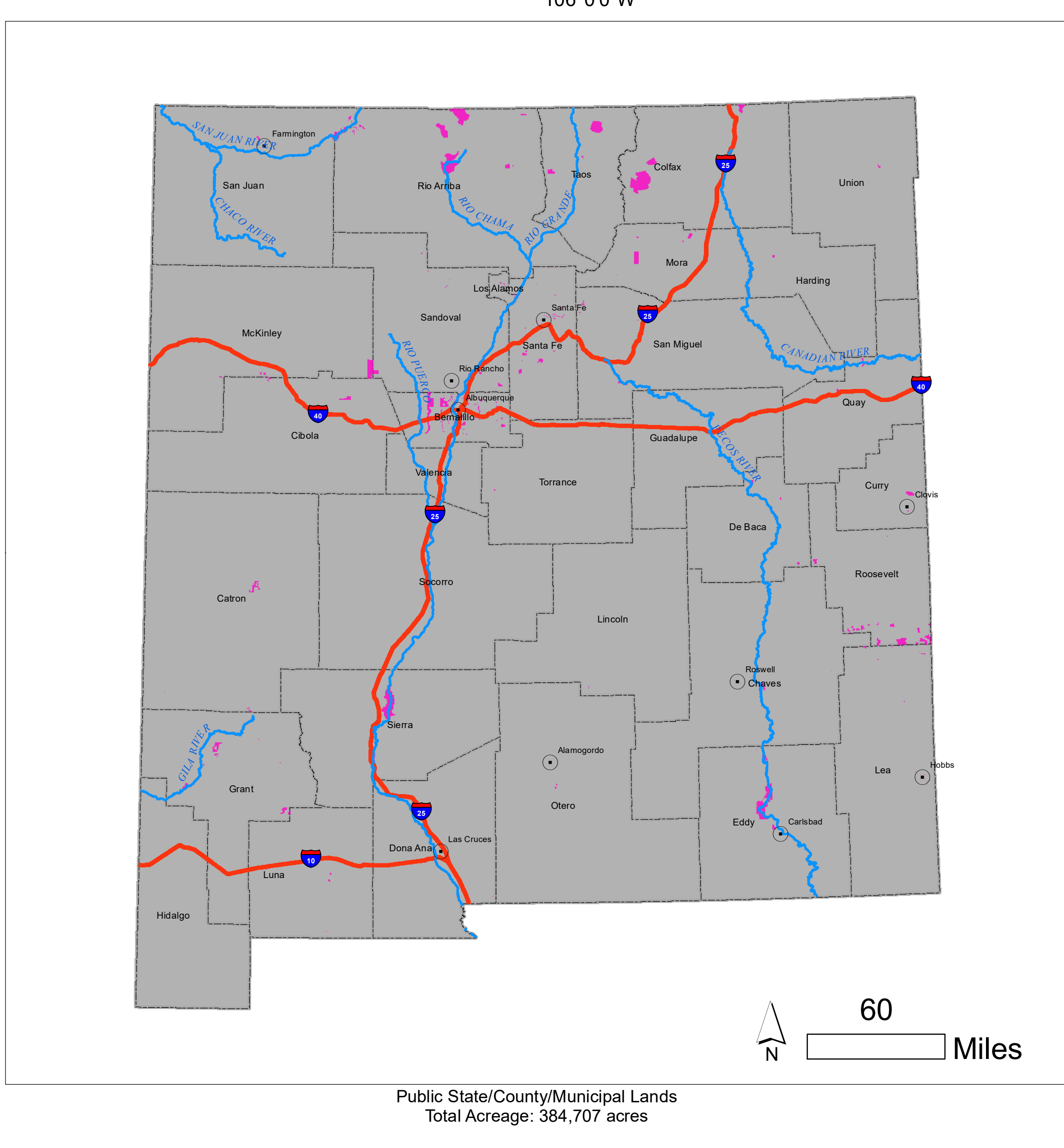
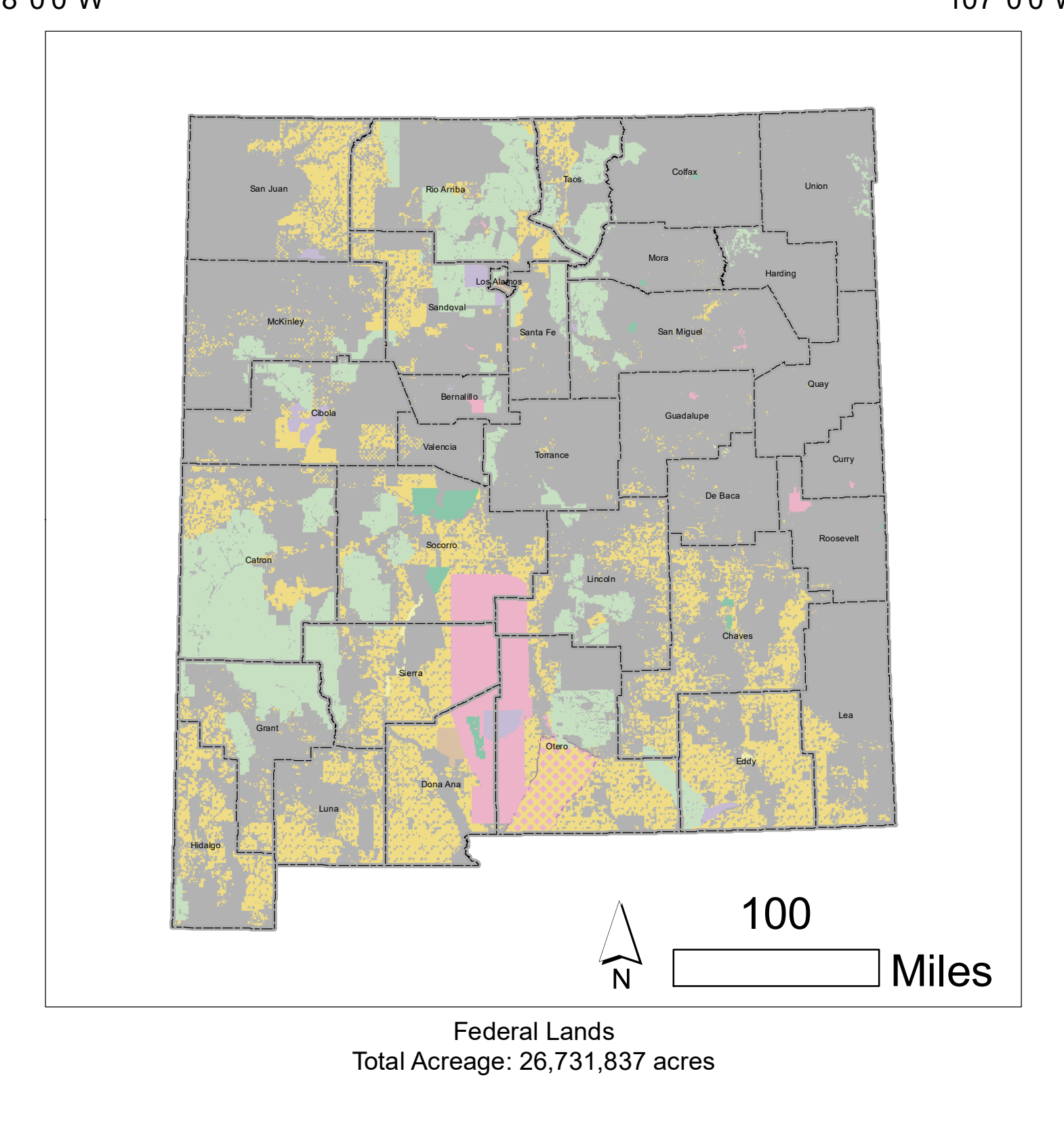
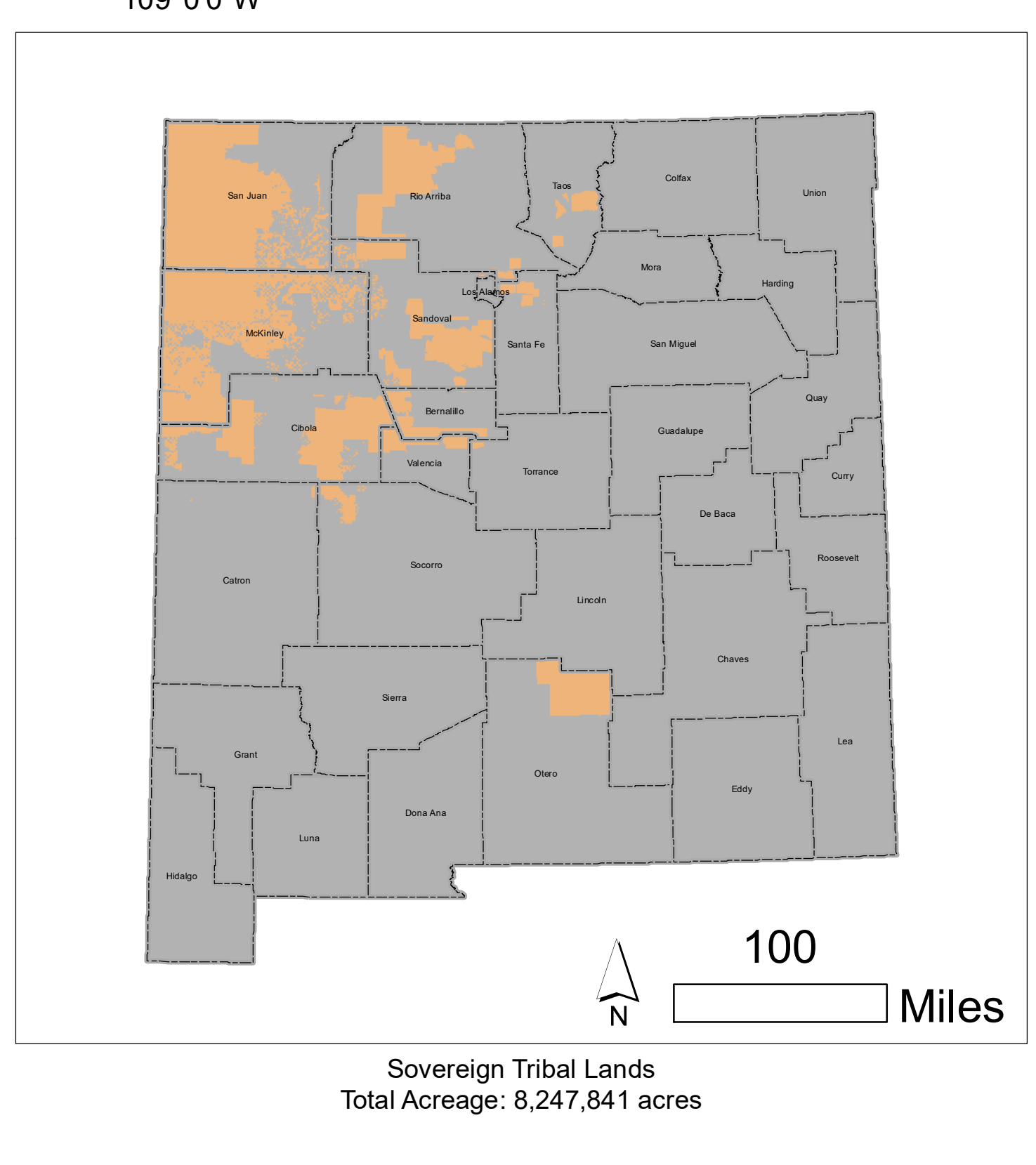
Land Stewardship of New Mexico

109°0'0"W 108°0'0"W 107°0'0"W 106°0'0"W 105°0'0"W 104°0'0"W 103°0'0"W



Map Coordinate Projection: USA Contiguous Albers Equal Area Conic USGS
Central Meridian -107.0

- Major Cities/County Seats
 - Major Rivers
 - U.S. Interstate Highways
 - U.S. Highways
 - State Highways
 - County Boundaries
- Sovereign Tribal/Private Lands**
 - Private Land
 - Sovereign Tribal
 - State Lands**
 - Public State/County/Municipal Land
 - State Trust Land
 - Federal Lands**
 - Bureau of Land Management
 - Bureau of Land Management/Department of Defense
 - Bureau of Reclamation
 - Department of Defense
 - National Park Service**
 - National Park Service
 - Other Federal Agency
 - U.S. Fish & Wildlife Service**
 - U.S. Fish & Wildlife Service
 - U.S. Forest Service



This map is the first in a series of maps being developed for New Mexico Livestock Board to separate New Mexico public lands potentially under the purview of the New Mexico Wild and Scenic Rivers Act (NMWSA 77-18-5 Wild Forests, conformation, history and deconformations; acid testing, Spanish colonial homes, both created (2007)). The map may not represent accuracy specific and is subject to the statute. No endorsement by New Mexico State University or any state agency listed or identified on the map is implied. Extent and additional digital data sets are being reviewed to ensure accurate surface ownership representation across the state of New Mexico. Accuracy based on data sets and limitations defined within appropriate metadata.

Map Authors: Product of New Mexico State University's Range Improvement Task Force (RITF) and Center for Applied Spatial Ecology (CASE). For further information contact Dr. Samuel T. Smallidge (875-646-9944; ssmallid@nmsu.edu).
Data Sources: Data were downloaded from National Geo-Analysis Project (GNAP) Protected Areas Database of the United States (PAD-US 1.4) <https://geoplayers.nps.gov/protected-areas/>.
The New Mexico Resource Geographic System (RGIS) <http://rgis.nmsu.edu/>.
New Mexico State Land Office <http://improvement.nmsu.edu/land/>.
New Mexico Energy, Minerals and Natural Resources Department <http://www.enr.state.nm.us/ENR/PDF/land.htm>.
Data.gov <https://www.data.gov/> and ESRI data <http://www.esri.com>.