

# LAMB SELECTION & FEEDING WORKSHOP



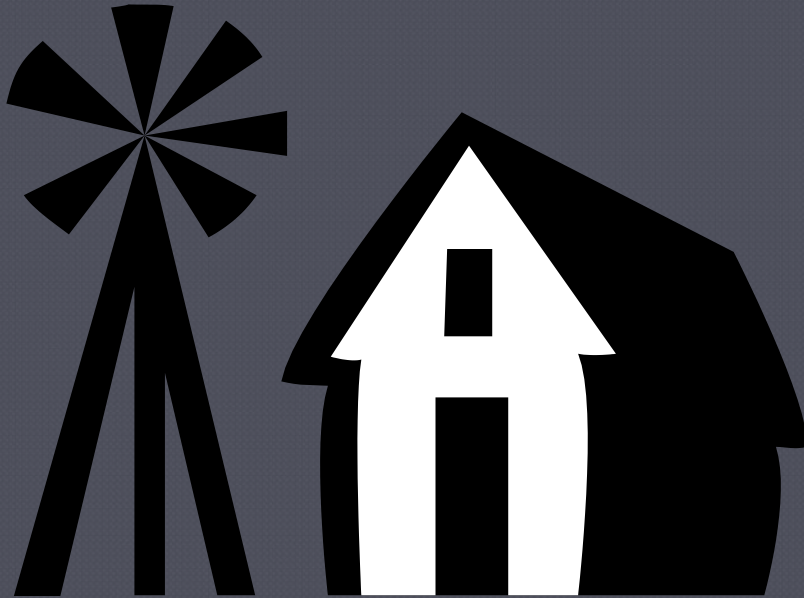
Craig Painter

State 4-H Agent

New Mexico State University



# FACILITIES & EQUIPMENT



- Barns/Sheds- At least 20 sq. ft/lamb. -Well drained & open to the south -warm in winter/cool in summer
- Fences- 42 inches tall
- Feeders- use movable troughs same height as top of shoulders
- Water troughs- Keep clean w/ cool water

# FACILITIES & EQUIPMENT

- Equipment-
  - ✓ Trimming table 45" long & 20" wide, 18" tall
  - ✓ -Clippers
  - ✓ Wool card
  - ✓ Rope/nylon halters
  - ✓ Hooves trimmers
  - ✓ Lamb socks/covers
  - ✓ Show box
  - ✓ Blower



# SELECTION

- Breeds
- Muscle
- Structural  
Correctness
- Style & Balance
- Growth Potential



# Breeds For New Mexico State Fair



- Dorset
- Other Mutton Breeds & Crosses
- Fine Wool/Western White Face
- Hampshire/Suffolk (Blackface)
- Fine Wool Crosses

# Muscle



- Select a lamb that feels firm or hard
- Good expression of muscle especially though hind saddle
- Square rump
- Tracks wide
- Widest area though stifle area
- Width through rack and loin

# Muscle







# Structural Correctness

- Lamb should travel & stand wide and straight on both front & rear legs
- Strong top, long and level rump
- Shoulder blades should be tight
- Heavy boned with strong pasterns



# Style and Balance

- Refers to the way body parts blend together
- “Eye Appeal”
- Clean front, smooth shoulders, level top, level rump, and tight hide
- Head held upright/comes out at the top of shoulders
- Chest plate tucked up

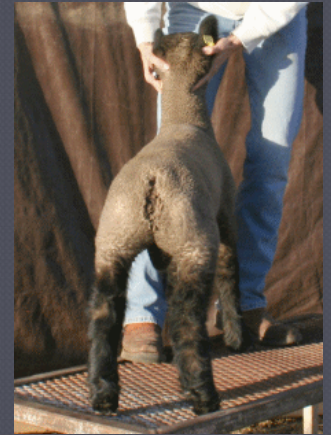




# Growth Potential



- Generally, larger frame lambs will grow faster and larger
- Lambs that are extremely long in the loin and rump will have an advantage over others



# Lambs Good or Bad??



# NUTRITION



- Water
- Protein
- Carbohydrates & Fats
- Minerals
- Vitamins
- Textured  
feed/pelleted feed
- Copper toxicity
- Feed additives

# Health

- Preventive health plan
- Enterotoxaemia
- Internal parasites
- Sore mouth
- Tetanus
- Ringworm
- Rectal prolapse
- Polyarthritis
- Scrapies Tag (on ewes)





# Show Ethics & Quality Assurance

---



- Never use off label medication
- Know withdraw times
- If you think it might be illegal, it probably is!
- Use Proper injection sites
- Know and follow ownership deadlines

# MANAGEMENT & FEEDING

---

- For beginners, a commercially prepared balanced ration is best.
- Breed & frame size play a major role in feeding programs
- Stick to a feeding program
- Feed lambs individually
- Monitor feeding program closely

# Fitting

---

- Fitting lambs requires more than simply shearing them.
- Always wash prior to shearing
- Shear while wool is damp
- Shear horizontal not vertical to make them appear longer
- Leave wool below knees & hocks
- Always use clean and sharp blades
- Cover lamb to keep clean

# Showing

---

- Practice, Practice, Practice!!!
- Teach lamb to “push”
- Keep one eye on judge, one on lamb!
- Never block view of judge
- Do not “fight” lamb
- Keep lamb set at all times
- Be a good sport, a graceful loser, and a humble winner!

# SHOWING



# Final Thought

---

Good Lambs are Born;  
Champions are Made

SAN JUAN COUNTY FAIR 2005

